



Compression sprayer with 4,6 and 8 litre in useful capacity respectively and an integrated design that facilitates the filling and pressurisation functions of the tank.

## Advantages

- A pressure regulator is included to ensure a homogenous application.
- It includes an extension to increase the spraying range.
- Additional nozzle set.
- Stable base which allows to hold the sprayer during the pressurization process.
- Complete use of the liquid thanks to the lower hose connection.
- Suitable for application of products of natural origin (pelargonio, acetic, etc...).



## Functional information



Ergonomic transport handle



Large funnel-shaped filling opening



Safety valve set at 4 bar



Hose connections to the lance and to the tank by thread without clamps or fittings



Adapted tank base to hold with the feet in the pressurisation process



Low-effort ergonomic handle



2-position pressure regulator



Fibreglass lance



0.42m extension

## Technical information

Technical information	KALE 6	KALE 9	KALE 12
VALVE	YES		
HOSE	1.3m PVC		
STANDARD NOZZLES	Adjustable conical		
LANCE	Fibreglass		
USEFUL CAPACITY	4 L	6 L	8 L
TOTAL CAPACITY	6 L	9 L	12 L
LITRES/MIN. 1,5 BAR	0.43 l/m		
LITRES/MIN. 3 BAR	0.6 l/m		
NET WEIGHT	1.5 Kg	1.75 Kg	2 Kg
WIDE FILLER OPENING	YES		
SET OF NOZZLES FOR HERBICIDE AND INSECTICIDE TREATMENTS	YES		
STANDARD ACCESSORIES	Pressure regulator, set of nozzles and 0.42 m extension		
LANCE AND EXTENSIONS	Lance and extension		
STRAPS	Adjustable		
PRESSURE REGULATOR	YES		

## Logistics data

Logistics data	KALE 6	KALE 9	KALE 12
CODE	8.38.56	8.38.59	8.38.50
EAN	84.14685.10034.4	84.14685.10035.1	84.14685.10036.8
CONDITIONING	4 units	4 units	2 units
UNITS PER PALLET	48 units	40 units	36 units
DIMENSIONS PER PALLET	1200 X 800 X 1100	1200 X 800 X 1070	1200 X 800 X 1165

## MAINTENANCE KITS



**PP MAINTENANCE KIT**  
Reference 8.38.05.875  
Keep your sprayer at peak performance. Designed for 5-9 L sprayers.

ROUND SEAL AN-5 No. 136	2.23.15.905	
RETAINER CLAMP No. 164	8.39.02.314	
ROUND SEAL AN-30 No. 159	2.23.15.930	
CHAMBER VALVE No. 165	8.38.05.314.1	



## ACCESSORIES

Personalize your sprayer adapting it to your application needs (height, hard-to-reach areas...)



**3.2 M TELESCOPIC LANCE**

Reference 8.35.40.913

**5.4 M TELESCOPIC LANCE**

Reference 8.35.40.915



**DOUBLE ADJUSTABLE NOZZLE**

Reference 8.34.46.802



**4-HOLE NOZZLE**

Reference 8.34.46.801



**CONICAL HOOD**

Reference 8.34.60.981

**RECTANGULAR HOOD**

Reference 8.34.60.980



**NORMAL WEED-KILLERS ELBOW**

Reference 8.34.60.934



**LOW-VOLUME WEED-KILLERS ELBOW**

Reference 8.34.60.935



**NOZZLE SET**

Reference 8.34.46.815.1



**1 M ALUMINIUM LANCE TUBE WITH COMPLETE ELBOW**

Reference 8.34.60.871

**1.5 M ALUMINIUM LANCE TUBE WITH COMPLETE ELBOW**

Reference 8.34.60.872



**1 M FIBREGLASS LANCE TUBE WITH COMPLETE ELBOW**

Reference 8.34.60.875

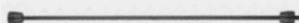
**1.5 M FIBREGLASS LANCE TUBE WITH COMPLETE ELBOW**

Reference 8.34.60.876



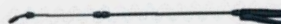
**FLEXIBLE DOUBLE NOZZLE**

Reference 8.34.60.936



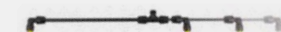
**EXTENSION 0.5M**

Reference 8.35.40.878



**COMPRESSION TELESCOPIC LANCE (+ADAPTER)**

Reference 8.34.60.938

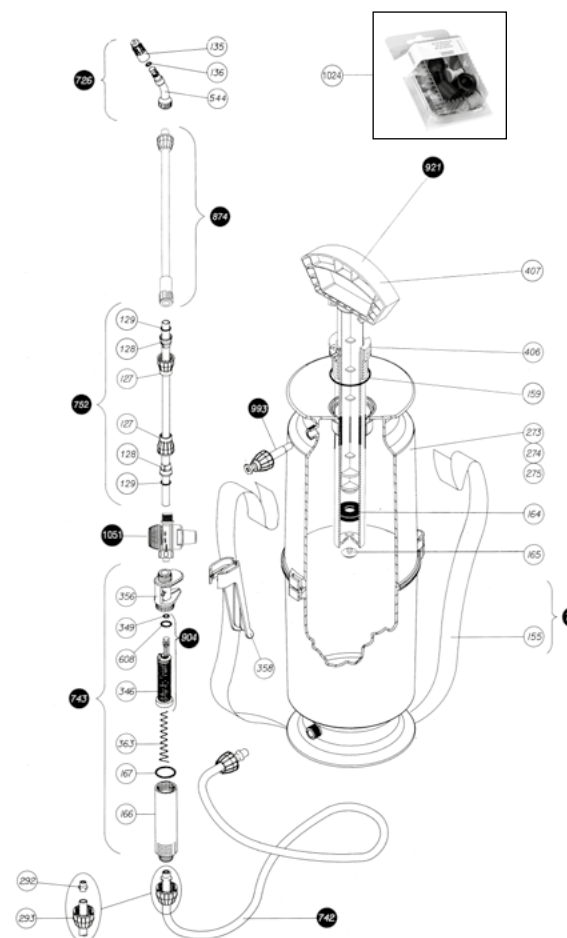


**EXTENDIBLE DOUBLE NOZZLE**

Reference 8.34.60.942

## SPARE PARTS

Extend the service life of your sprayer easily replacing parts.



Nº	COD.	Q	SPARE PARTS NAME
127	8.38.12.323	2	CONE NUT
128	8.38.12.324.1	2	Ø 8 CONE
129	2.23.99.910	2	ROUND GASKET Ø 7,5
135	8.39.02.323	1	NOZZLE Ø 1
136	2.23.15.905	1	ROUND GASKET AN-5
155	8.38.12.420	1	STRAP
159	2.23.15.930	1	ROUND GASKET AN-30
164	8.39.02.314	1	COLLAR SEAL
165	8.38.05.314.1	1	CHAMBER VALVE
166	8.39.18.367	1	GRIP
167	2.23.15.914	1	ROUND GASKET AN-14
273	8.38.56.301	1	KALE-6 TANK
274	8.38.59.301	1	KALE-9 TANK
275	8.38.50.301	1	KALE-12 TANK
292	8.38.08.328	2	HOSE BUSHING
293	8.38.12.312	2	NUT
346	8.39.47.365	1	LANCE FILTER
349	2.23.16.903	1	ROUND GASKET AN-3
356	8.39.46.366	1	HANDLE BODY
358	8.39.46.368	1	BLACK GRIP
363	8.39.41.342	1	SPRING LANCE
406	8.38.46.303	1	CHAMBER
407	8.38.46.308	1	HANDLE
544	8.28.40.322	1	SPRAYER
608	2.23.16.906	1	ROUND GASKET AN-6
726	8.38.08.803	1	ELBOW WITH NOZZLE
741	8.38.12.802	1	STRAP WITH RINGS (12)
742	8.38.05.805	1	COMPLETE HOSE
743	8.38.08.801	1	COMPLETE HANDLE
752	8.38.45.803	1	TUBE WITH NUTS
753	8.38.45.804	1	COMPLETE LANCE
874	8.38.77.809.1	1	EXTENSION PIECE 0,42 M.
904	8.39.47.811	1	FILTER WITH GASKET
921	8.38.46.601	1	COMPLETE CYLINDER
993	8.38.05.806.4	1	SAFETY VALVE
1024	8.34.46.815	1	SET OF NOZZLES
1051	8.34.47.801	1	PRESSURE REGULATOR
	8.38.56.200	1	INSTRUCTION SHEET
	8.38.56.201	1	KALE-6 PACKAGING
	8.38.59.201	1	KALE-9 PACKAGING
	8.38.50.201	1	KALE-12 PACKAGING