



17 litre capacity fire extinguisher with a powerful lance (8-12 m), folding hose, padded straps, adjustable belt and rigid tank.



Advantages

- High resistance tank for forest works.
- Dual effect lance with large stream range.
- Ergonomic fire extinguisher with lumbar support.

Technical information

Technical information	FOREST FIRE EXTINGUISHER
HOSE	1.75m (PVC)
STANDARD NOZZLES	Adjustable brass conical nozzle
LANCE	Chromed-plated brass lance with dual effect hydronette system
USEFUL CAPACITY	17 L
TOTAL CAPACITY	17,5 L
GROSS WEIGHT	3.84 Kg
NET WEIGHT	3.35 Kg
WIDE FILLER OPENING	YES
TRANSLUCENT LEVEL INDICATOR	YES
LANCE AND EXTENSIONS	Lance/Hose
STRAPS	Padded and adjustable, with waist support
VERTICAL STREAM RANGE	7m
HORIZONTAL STREAM RANGE	12m
HORIZONTAL SPRAY RANGE	4m

Logistics data

Logistics data	FOREST FIRE EXTINGUISHER
CODE	8.39.08.906
EAN	84.14685.01045.2
CONDITIONING	1 units
UNITS PER PALLET	14 units
DIMENSIONS PER PALLET	1200 X 800 X 1020

Functional information



Nozzle specially designed to optimise the stream and scope of the spray



Simple assembly system for easy cleaning and maintenance



Stopper with hermetic seal and pressure release valve



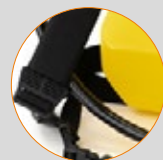
Ergonomic and translucent tank



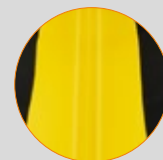
Hose fastening for transport



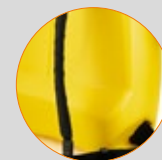
Integrated handle



Padded, adjustable straps with waist fastening



Sight glass



Lumbar support, greater comfort



Lance fastening

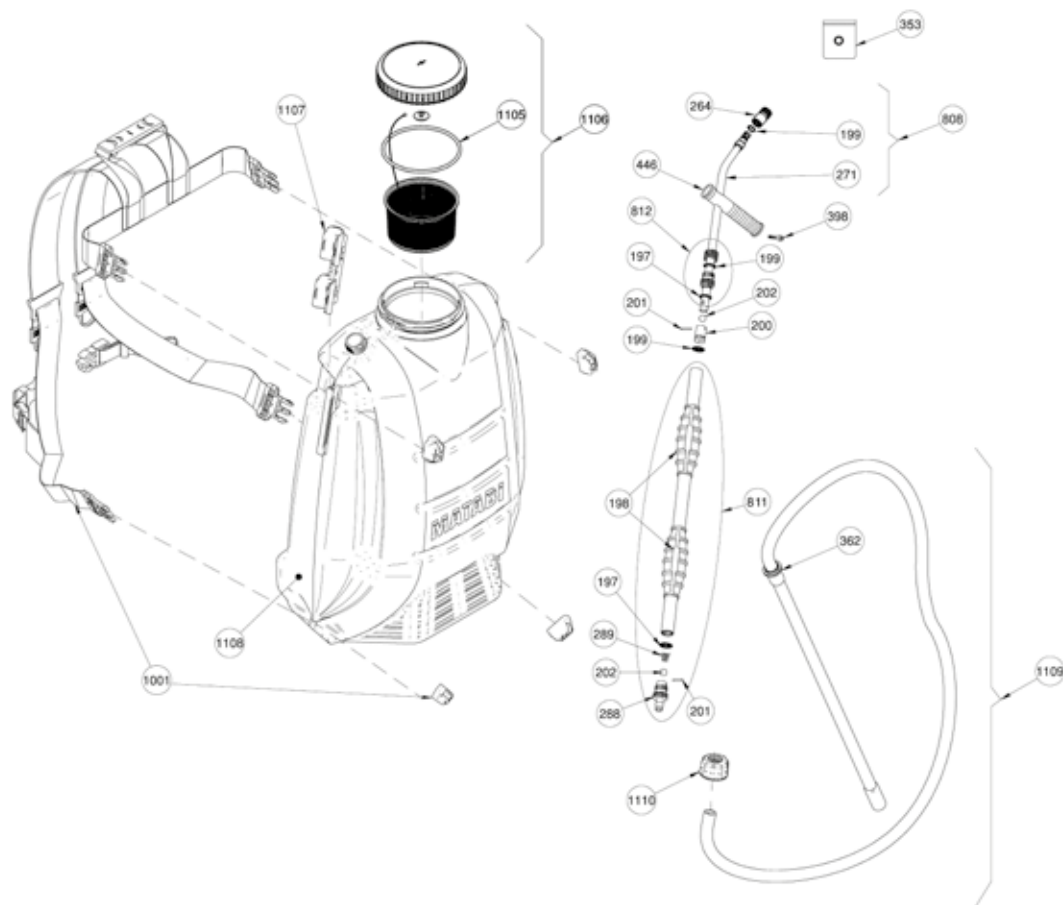


Double-acting pump body to optimise effort



SPARE PARTS

Extend the service life of your sprayer easily replacing parts.



N.	COD.	Q	SPARE PARTS NAME
197	8.39.04.303	2	RUBBER WASHER
198	8.39.04.306	2	GRIP
199	2.23.15.911	4	ROUND GASKET AN-11
200	8.39.04.009	1	PISTON
201	8.39.04.005	2	PIN
202	2.20.08.010	2	STAINLESS STEEL BALL Ø 10
264	8.39.08.017	1	NOZZLE
271	8.39.08.620	1	TUBE WITH SPRAYER
288	8.39.08.002	1	INLET NIPPLE
289	8.39.08.324	1	SPRING
353	8.39.04.202	1	BAG OF SPARES
362	2.23.15.915	1	ROUND GASKET AN-15
398	2.59.26.740	1	SCREW
446	8.39.04.324	1	GRIP
808	8.39.08.803	1	TUBE WITH NOZZLE
811	8.39.08.801	1	COMPLETE BODY
812	8.39.08.805	1	GREASING NIPPLE
1001	8.30.43.605	1	STRAP
1105	2.23.15.101	1	ROUND GASKET Ø 101
1106	8.39.08.807	1	COMPLETE CAP
1107	8.39.08.306	1	EXTINGUISHER BRACKET
1108	8.39.08.303	1	TANK
1109	8.39.08.808	1	COMPLETE HOSE
1110	8.39.08.304	1	NUT
	8.39.08.202	1	INSTRUCTION SHEET
	8.39.08.205	1	PACKAGING